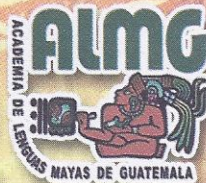


KAQCHI' WUJ



¡Kaqchikel ri qaxe'el, E kaqchikela' ri qajotay!

RUJUK'AL JUN KAQCHI' WUJ

Ri Kaqchikel Cholchi', juwinäq juna' pa Maya' Cholq'ij rub'anon pe samaj pa ruwi' ri qach'ab'äl chuqa' pa ruwi' ri qab'anob'al.

RI QASAMAJ:



SOLCHI'

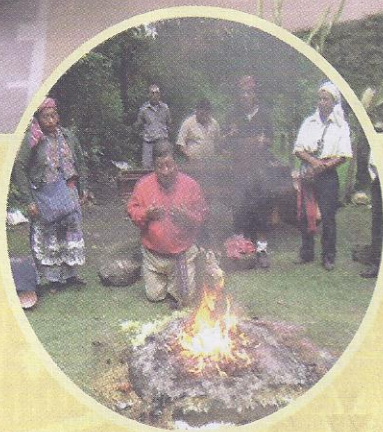
TZIJOB'ÄL



TIJONIK



B'ANOB'ÄL

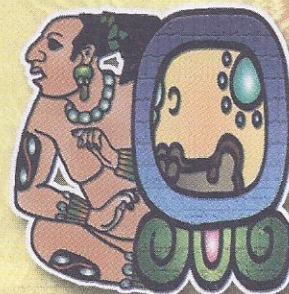


Kab'lajuj B'aqtun
B'elejlajuj K'atun

Kajlajuj Tun
Oxlajuj Winäq

Julajuj Q'ij
Oxlajuj No'j

Xel Rujuk'al jun Kaqchi' Wuj.



RUJUK'AL JUN KAQCHI' WUJ

K'AMÖL TAQ B'EY PA KAQCHIKEL CHOLCHI'

Junta Directiva de la Comunidad Lingüística Kaqchikel 2005-2008.

NAB'EY K'AMÖL B'EY:	Cecilio Tuyúc Sucuc
RUKA'N K'AMÖL B'EY:	Narciso Cojti Macario
AJTZ'IB':	Guillermo Rodríguez Guaján
AJPWAQ:	Pedro Iboy Chiroy
NAB'EY TO'ONEL:	José Mucía Batz
RUKA'N TO'ONEL:	Herlinda Poyón
ROX TO'ONEL:	Roberto Tubac

XENIK'ON RUPAM RI KAQCHI' WUJ

Ana María Chonay Chonay
Lu' Pedro Morejon Patzán
Rosalbina Sisimit Peren
Pablo Chex Curuchich
Carlos Emilio Guarcax Gonzalez

K'amöl b'ey samaj
Cecilio Tuyúc Sucúc

Kaqulew, Oxlajuj No'j, octubre de 2007



KAQCHIKEL CHOLCHI'
Comunidad Lingüística Kaqchikel
6ta. Ave. 3-28 Zona 4,
La Joya Chimaltenango
Telefax: 7839-6577 y 7839-4147
kaqchikel@almg.org.gt
kaqtijayclk01@yahoo.es

RUCHOLAJEM

Maya' tjonik

Rutz'ib'axik ri b'anoj..... |
Ri ch'akultz'ib' kik'wan ch'ut..... |
¿Achike ana'oj pa ruwi' ri kaqtijay?..... |

Maya' b'anob'äl

Kik'aslemal ri nimaläj taq achi'a'..... |
Ruxe'el ri rub'i' ri ruq'a' tinamit xe koxol..... |
Ruxe'el ri rub'i' ri ruq'a' tinamit chipiaqul richin pa su'm..... |

Rusijal qach'ab'äl

Numak..... |
Ki raqän ya'..... |
Pa nutinamit nqaq'ij..... |
Ri xoch'..... |
Ri q'anapwaq xok aq'a'l..... |
Kaqchikel cholchi'..... |
Richin ri xtib'e ok nutijonel..... |
Toq xinwetamaj awäch..... |
Kaqchikel cholchi'..... |
Pixa'..... |
Qach'alal qi'..... |

Rutzijol

¿Achike ri' ri kaqchikel cholchi'?..... |
Runimaq'ijuxik rujuna' ri kaqchikel cholchi'..... |

NAB'EY TAQ TZIJ

Ri Kaqchikel Cholchi' nuk'awomaj chi ke konojel ri winaqi' ri kiya'on pe kik'u'x kuchuqa' pa ruwi' rupab'axik, rusolik, ritaluxik chuqa' ruk'iyirisaxik ri qach'ab'äl ri qana'oj; ruma k'a ri' chupam rujuk'al jun Kaqchi' Wuj re' nqaya' rutzijol chi ri Kaqchihkel Cholchi' rub'anon juwinäq juna' pa maya' Cholq'ij samaj, ri q'ij Jun Imox ri xik'o kan, xnimaq'ijux rusamaj ri qamoloj. Akuchi k'a xkimol ki' ri qawinaq, chi ak'wala', chi xtani', chi' alab'oni', chi ixoqi' chi achi'a', konojel ri najin nkik'ul tijonik pa ruwi' retamaxik rutz'ib'axik, rusik'ixik, rak'axaxik chuqa' ruch'ab'exik ri Kaqchikel Ch'ab'äl.

Ke k'a chuqa' ri' chupam re jun qawuj re' xtiq'il chuqa' jun ka'i' oxi' na'oj kitz'ib'an qati't qamama', qate' qatata', chuqa' kitzij kina'oj q'opoji' ak'wala', ri najin nketamaj yetz'ib'an pa qach'ab'äl.

Qach'alal ri nqajo' chi xtisik'ij ta re jun qawuj re', chuqa' xtok ta jun utziläj samajb'äl richin nqak'iyirsaj ri qach'ab'äl chuqa' ri qana'oj.



RUTZ'IB'AXIK RI B'ANOJ:

Xtz'ib'an: Ma Carlos Emilio Guarcax González

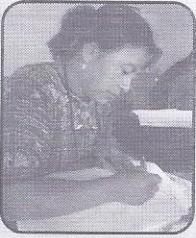
Wakami xtiqetamaj rub'eyal rutz'ib'axik ri b'anoj, ri b'anoj ja ri' ri silonem, ronojel ri nb'anatäj, qetaman k'a chi chupam Runuk'ulem rutz'ib'axik ri qach'ab'äl k'iy kiwäch taq tzij chuqa' k'o jun rub'eyal richin yojtz'ib'an, richin nk'oje' rejqalem ri b'anoj nnk'atzin ruk'aj taq tzij: Ruq'ijul, ri winaqilal chuqa' ri ruk'aj rutzij ri nk'utu' we jun, ka'i' winaqilal yeb'ano.

Tiqetamaj rutz'ib'axik ri b'anoj:

Ri b'anoj nkijäch ki' pa ka'i' peraj: ri **Jub'anoj** chuqa' ri **kab'anoj**.

Ri **jub'anoj**: ja ri xa jun winaqilal k'o chupam ri b'anoj.

Tz'etb'äl:



ntz'ib'an



yexajo'



ye'etz'an



yesamäj

Ri **kab'anoj**: ja ri jun winaqilal nb'ano richin chuqa' k'o jun nk'ulu.

Tz'etb'äl: xqak'ül, xqap'is, xtz'ib'äx

SAMAJ:

Wakami tatz'ib'aj achike ye'ajin nkib'än ri winaqi':

Tz'etb'äl: Yeq'ojoman



SAMAJ:

Wakami tatz'ib'aj oxi' b'ab' rik'in b'anoj ri xqetamaj.



RI CH'AKULTZ'IB' KIK'WAN CH'UT

Xetz'ib'an: Rutijonela' ri Kaqchikel Cholchi'
Juna' 2006

E ja re' :

B' ch' k' t' q' tz' (') __ ch'ut.

Tz'etb'äl: Ch'oy K'oy B'aq Q'oq' Tz'o' T'ot'

Je k'a re' ri ch'akultz'ib' kik'wan ch'ut, jantape' ri kitz'ib'axik chuqa' ri kik'oxomal xa xe pa ri Maya' Ch'ab'al yeqil wi. We röj nqana'ojij ri kik'oxomal chuqa' ri kitz'ib'axik majun b'ey xke'okisäx ta pa kaxlan ch'ab'al, xa xe k'a röj ri yojokisan.

Samaj: tatz'ib'aj qa pa ruwi' re taq juch' ka'i' tzij ri kik'wan ch'ut chi kijujunal ri ch'akultz'ib' ri xqatz'ët qa.

Chupam re taq kajtz'uk re' tab'ana' kiwachib'äl jujun chikopi' ri kib'i' nuk'waj ch'ut chuqa' tatz'ib'aj ri kib'i':

--	--	--	--



Samaj: tasik'ij la jujun tzij e tz'ib'atäl qa, k'a ri' taya' retal achike kokisaxik ri jujun tz'ib', pa ruk'isb'äl natz'ib'aj qa jun tzij pa ruwi' la juch', ri tzij xtatz'ib'aj qa k'o chi ruk'wan ri tz'ib' ya'on retal.

B' ___ b'alam

ch' ___ ch'ok

k' ___ k'olaj

q' ___ q'an

t' ___ t'üq

tz' ___ tz'um

' ___ kaji'

tz' ___ katz'uj

t' ___ let'et'

k' ___ ak'wal

q' ___ saq'ul

ch' ___ juch'

Tijonel: Enma Cenaida Ajquejay Pichiya.
Aj Patz'iyá'.

¿ACHIKE ANA'OJ PA RUWI' RI KAQTIJAY?

Jun utziläj rusamaj ruchapon ri kaqchikel cholchi' akuchi yeruto' ri qawinaq, ri kaxlani' richin nya'öx rejqalem ri qach'ab'äl chuqa' ri qab'anob'al, re' janila nto'on richin nch'ab'ëx chuqa' richin ntz'ib'äx ri qach'ab'äl, jun rub'eyal richin njotayin pe ruma wakami e k'o k'iy winaqi' ri nketamaj ruch'ab'exik chuqa' ri rutz'ib'axik ri qach'ab'äl. Re na'oj re' janila nk'atzin richin nya'öx rejqalem, chuqa' richin nya'öx ruchuqa' ri qach'ab'äl chuqa' ri qab'anob'al.

¿ACHIKE RUB'EYAL XAYA' RI TIJONĪK?

Jalajöj rub'eyal akuchi ri tijoxela' xesamajin rupam, rin xa xe xento' richin xketamaj pa rub'eyal. Chuqa' xinch'är pa ka'i' peraj ri tijonik, jun akuchi xojch'ob'on chuqa' xojtzijon pa ruwi' ri qab'anob'al, ri kina'oj ri qati't qamama'. Ri jun chik peraj pa ruwi' ri qach'ab'äl richin yech'on chuqa' richin yetz'ib'an.

¿ACHIKE XAQ'T'?

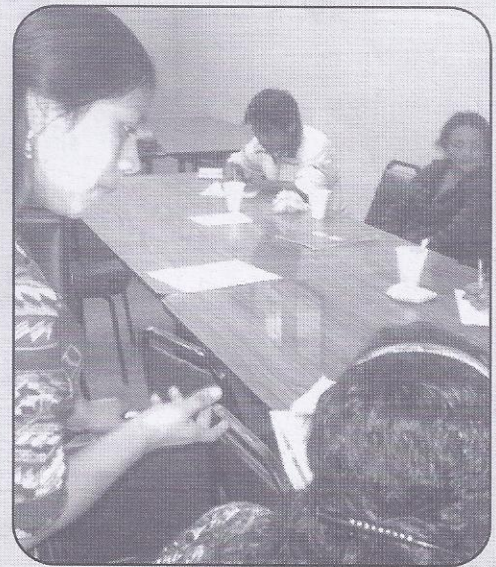
Ri tijoxela' nkiya' rejqalem ri qach'ab'äl, ri qab'anob'al, ri kina'oj ri qati't qamama', nkirayij nkitijoj jub'a chik ki' richin nkik'üt ri qach'ab'äl chi ke ri kach'alal chuqa' pa kisamaj. Chuqa' e jkil pa ruwi' ri rejqalem ri kib'anob'al (identidad.)

¿ACHIKE K'AYEWAL XAWIL?

Ri ramaj, ruma k'o winaqi' ri ruma ri kisamaj, man kan ta kiramaj richin xkik'ül ri tijonik, chuqa' k'o k'amöl taq b'ey ri man xkiya' ta q'ij chi ke ri kisamajela' richin xkik'ül ri tijonik. Chuqa' k'o winaqi' ri man xkajo' ta xkik'ül ri tijonik ruma majani q'axnāq pa kiwi' ri rejqalem ri qach'ab'äl, ri qab'anob'al.

NA'OJ RICHIN ÜTZ XTUB'ÄN APO RI SAMAJ

-Ninük' ta jeb'ël ri na'oj kik'in ri k'amöl taq b'ey richin nya'öx kiramaj ri samajela' richin nkik'ül ri tijonik.



Tijonel: Enma Cenaida Ajquejay Pichiya

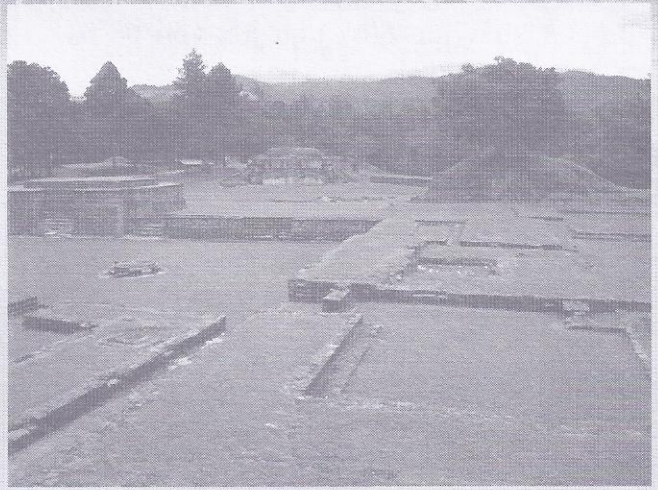
KAQTIJAY Kaqchikel Tijonem Jay

Jun chi ke ruqa' rusamaj ri Kaqchikel Cholchi' akuchi' yetijöx ri qawinaq richin yetz'iban, yesik'in chuqa' yetzijon pa rub'eyal chuqa' yetijöx ri qawinaq ri man yetzijon ta chik pa qach'ab'al.

KIK'ASLEMAL RI NIMALAJ TAQ ACHI'A'

Xetz'ib'an: Rutijonela' ri Kaqchikel Cholchi'
Juna' 2006

Wawe' nqatzijob'ej kik'aslem ri k'isb'al ka'i' nimalaj taq achi'a' xkik'waj b'ey chi kiwach qawinaq kaqchikela' xek'oje ke la' pan Ixim che' ri ka'i' achi'a' re' jun rub'i' Kaji' Imox ri jun chik B'eleje' K'at. Yekib'ij ri winaqi' ri kitz'ib'an wuj pa kiwi' ri ka'i' achi'a' re' nkib'ij chi rije' xekito' chi ke ri kaxlani' richin xkib'an oyowal kik'in ri k'iche'a'.



IXIMCHE: Wawe' xek'ase' wi ri Ajpopi' Kaji' Imox, B'eleje' K'at.

Ri q'ij wuqu' ajmaq ri kaqchikela' xkiya' kan kitinamit, Kaji' Imox Ajpop Sotz'il, B'eleje' K'at Ajpop Xajil, ja re' ri e ka'i' achi'a' kik'wan b'ey chi kiwach ri qawinaq toq xetikir el rik'in ri oyowal kik'in ri kaxlani' « Chupam ri q'ij kaji' keme' (5 de septiembre 1524.) » toq q'axnāq lajuj q'ij tōq xe'animāj el pa kitinamit. ri ka'i' achi'a' re', k'o jun chik kib'i' ri Kaji' Imox chuqa' rub'i' SINAKAN. Ri B'eleje' K'at chuqa' rub'i' SAQACHUL. Toq xetikir el rik'in ri oyowal ri ka'i' achi'a' k'amöl taq b'ey xekik'waj ri winaqi' pa taq k'ichelaj, chuxe' taq che', chi kikojöl taq k'an, pa taq siwan xkewaj ki' richin man anināq ta xekamisāx, tōq ri kaxlani' taq winaqi' xekikanoj richin yekikamisaj ri kaqchikela' xekib'an jul, xekitik che' simāj rutza'm, jun rub'eyal richin xekikamisaj ri kaxlani' e b'enāq chi kikanoxik chi rij kikej.

Ri Kaji' Imox rik'in ri B'eleje' K'at chuqa' ri winaqi' kaqchikela' xekok'isaj wo'o' juna' rik'in kaji ik' pa taq k'ichelaj, pa taq siwan. Man jub'ey ta ri ajpopi' xekiya' kan ri kiwinaq kiyon, man xkixutuj ta rub'eyal kik'aslem, man xkimestaj ta ruk'awomanik ri ajaw, man jub'ey xkimestaj ri kib'anob'al.

« Chupam ri q'ij waqxaqi' no'j (8 de mayo 1530) » xkijäch ki' ri Ajpop Sotz'il junam rik'in ri ajpop xajil ke la' Pan Q'an pa ruq'a ri Tunatiw. Ri q'ij ri xkijäch ki' ri ajpopi' konojel kiwinaq kik'ajol, kimi'al, kimam e b'enāq chi kij. Chupam ri juna ri', juq'o' ixoqi'

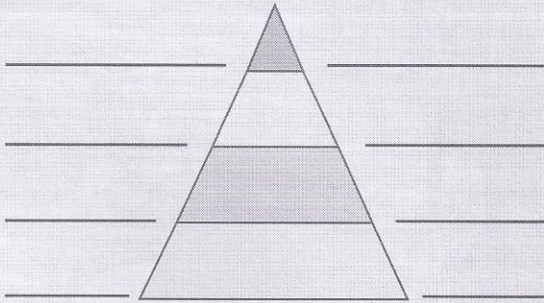


chuqa' juq'o' achi'a' ri Tunatiw xerutāq pa ch'ajoj qanapwāq. Chupam ri q'ij « wuqu' kej (24 de septiembre 1532) » xkäm ri ajpop B'eleje' K'at, najin nuch'āj q'anapwāq ke la' pan Q'an, chupam ri « q'ij oxlajuj q'anil (26 de mayo 1540) » xjitz'äx ruqul ri Ajpop Sotz'il Kaji' Imox, rik'in kikamik ri Ajpop re' xk'is ri yujuj kik'in ri aj kaqchikela' winaqi'

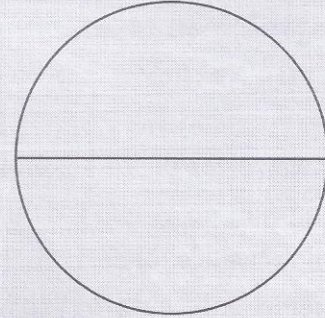
Chupam ri tzijonem xqil ri tzij ajpgop chuqa' ajpopi'. Pa qajolom xpe ri k'utunik achike ri' ri tzij ajpgop chuqa' ri ajpopi'?: kojtzijon qonojel pa ruwi'

Samaj pa moloj:
kojtzijon chi qawäch k'a ri' nqasamajij ri nk'utux chi qe.

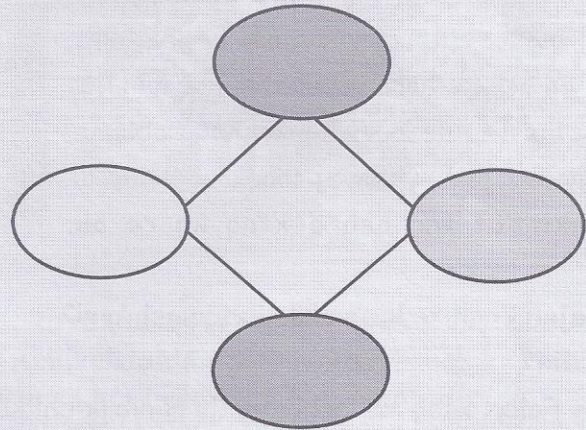
Tqatz'ib'aj wawe' kib'i' winaqi' chuqa' kib'i' tinamit e k'o chupam ri tzijonem



Chupam ri setesik re' tqatz'ib'aj kib'i' ri ka'i' nimaläj taq' achi'a



Tatz'ib'aj wawe' kaji' kib'i' winaqi' k'amöl taq' b'ey e k'o pan atinamit. Kiq'axsan k'ayewal pa kik'aslem achi'el ri kik'aslem ri ajpopi' ri xqatzijob'ej qa pa qawuj.



SAMAJ PA QAYONIL:

Nab'ey: tatz'ib'aj ri na'oj wawe'.

Achike k'ayewal xawil chupam ri tzijonem.	Achike utziläj taq' na'oj xawil chupam ri tzijonem

Ruka'n: We man xekamisäx ta ri ajpopi', achi'el nub'ij ri tzijonem, achike ta k'a rub'anon ri qak'aslem röj kaqchikela' « tatz'ib'aj ri ana'oj ».



RUXE'EL RI RUB'I' RI RUQ'A' TINAMĪT XE KOXOL

Tat xya'on ri tzij: Felix Quila Lix

Rujuna : 78

Juna': 2006.

Tzinb'anel : Adolfo Chicol

Ruq'a' ri samaj : Maya' Nimab'al K'u'x

¿Tat, tatzijoj chi qe akuchi ta petenāq ruxe'el ri tzij Xe Koxol nib'ix chi re?

Tat Felix: "wawe' nib'ix Xe Koxol wawe' k'o jun ab'aj, jun nīm ab'aj rub'i' achike ruma xub'ij k'o xol, wawe k'oxol ab'aj yecha chi re porque ri ojer ri qate qatata, yeb'iyaj a las tres de la mañana, las cuatro de la mañana yeb'e, porque chi ri ojer kan manjun problema, kab'iyin achike hora yayakatej kab'iyin, las nueve las diez de la noche manjun problema, entonces ri je ri yeb'iyaj chaq'a ri chuwa ik' ri yekitz'āt taq achi'a xtaq ke re ok.

Samajel: ¿achike kib'anikil ri xtaq achi'a ri?

Nana Felix: xtaq mit achi'a' ri, ja ri nib'ix chi ke sombreron yecha la q'eqa chi re, pero ri jari ri xtaq säq k'oxol yecha chi re, jari kib'i' ri xtaq achi'a' ri, ja ri ri xtaq e säq k'oxol, entonces xtaq achi'a ri yetzetetaj kere apo yepe yekitzeqelb'ej, entonces kela yejote, kela akuchi k'o ri ab'aj chi ri yeb'ek'is wi, entonces ruma ri xkib'ij chi re ri jun ab'aj ri k'oxol ab'aj."

Samajel: o sea kib'i' ri xtaq achi'a' ja ri xya'öx chi re ri...

Tat Felix: "ja ri xya'öx chi re ri ab'aj, entonces ruma ri jun k'oxol ab'aj, entonces como chuxe la ab'aj la k'o re aldea re, wawe' k'o pa jotol pa qawi' k'o q'anij entonces ruma ri taq xb'ix xek'oxol ri ab'aj

Samajel: chi ri' petenāq wi ruma ri ke ri' nib'ix chi re.

Tat Felix: Xe K'oxol, a re xa chuxe la k'oxol k'o wi, ruma ri xkib'ij Xe K'oxol chi re,

Samajel: a matyox chawe tat ja ri nuq'ajuj ri tzij Xe K'oxol, matyox chawe, achi'el re xinnataj yan apo chawe re nuk'utunik re ri pa ruwi' ri ruxe'el ri qak'aslem, re nab'ey nuk'utunik ri nub'ij".

MAYA' NIMAB'AL K'U'X; jun ruq'a' rusamaj ri Kaqchikel Cholchi' akuchi najin numöl kitzij kina'oj qati't qamama' qate' qatata'. Re jun Tz'jonem re' xtz'ib'äx kan achi'el yetzijon ri qawinaq.



RUXE'EL RI RUB'I' RI RUQ'A' TINAMÏT CHIPIAQL RICHIN PA SU'M

Rutzij ri tat: Perfecto Yos

Ajcholonel, kak'al lajuj juna' rusamajin

Tzib'anel: Adolfo Chicol Gámez

Ruq'a' samaj: Maya' Nimab'äl k'u'x

Ri chipiacul ri ojer ruq'ijul k'a ri, taq k'a jani' ta e k'o ri qati't qamama' wawe chupam re lugar re', k'a ri xe'oqa xa chila pa tinamït ri patzún chila e k'o wi ri qatik qamama' ri ojer taq winaqi', entonces como xb'an k'a parcelar re parte re, pero re ruyon k'icheläj k'a re ri, ruyon montañas re wawe' e k'o kon gana ri chikopi', y wawe kon gana ri q'ayis montaña k'a ri, nimaläj taq che' ri e k'o entonces wawe k'o jun k'an rub'i' qul, ke taq re kipam ri k'a ri tijisis che' chirij ri b'enäq wi, ja k'a ri nok richin nikijitz b'ej ruwi' kachoch, nikijitz b'ej ruwi' kachoch, ri puro tzun, jari ri nab'ij rat ja ri, rat ri ku'un nab'ij chi re, röj wawe niqab'ij qul, pero ri jun k'an especial, jeb'ël nikowin chi re ruwi' taq jay, ruxe taq jay richin nib'an la qejoj kan xe ri cha ri wawe chupam ri k'ichelaj re pero ruyon re k'o qul pero kere rub'anun ri loq'oläj k'an ri chupam ri k'ichelaj.. Y entonces xetoqa ri qati't qamama' k'a ri xkitz'et pe ri ruyon ri k'a ri, ri ruyon qul, entonces ruma ri xkib'ij chire ri re lugar qul, lugar de qul, ya xkib'en mejorar xkib'en traducir wakamin chipiacul yecha chire, chipiacul jari nib'ix chi re lugar de bejucos, pa qach'ab'äl e xa qul, qul ri k'an, jun k'an especial pero ya pa ri kastilla nikib'ij ri winaqi' chire ri chipiakul es un lugar de bejucos, kerri xub'en pe taq xetz'ukutej pe ri winaqi' cha wawe ya taqil ya xkib'en parcelar ri taq ulew y ya xek'oje rajaw, wakamin dios mio ri che' ri ninjun chik xtatz'et hasta ri k'an ri manjun chik xtatz'et xk'is, ronojel xa xek'iyir ri winaqi', wakamin la kib'anun la hay dios mio hasta k'o qavecino kan apena chik ri taq kachoch k'o, chire ri xtaq kisitio ya manäq chik yeb'iyin ta b'a chik manäq chik yeb'e, kerri ri kib'anum pe, ri xb'e k'a ri ruq'ijul ri pa ciento kan juna'

NUMAK

Xtz'ib'an: Oxlajb'atz'

Ja inpetenäq chawäch loq'oläj
ruk'ux kaj, ruk'u'x ulew
Loq'oläj ruk'u'x q'aq', ruk'u'x kaq'iq',
ruk'u'x ya'
Nloq'oq'ej awäch, ntewchuj awäch
Ja rïn ri ruk'isb'äl chi ke ri ajtz'aq, ajb'it.

Ja inpetenäq chawäch nute'
Jun, ka'i, oxi' ok nutzij nuk'amom pe chawe
Ja rïn ri ch'ip chi ke konojel ri awal
Ja rïn ri, ajmak, ajcha'oj chawäch loq'oläj
nana.

Rïn ri yatintz'ila', rïn ri xinxaqij akik'el
Rïn ri xinxaqij ri awuxla', ajub'util
Rïn ri nporoj ri nunimal ri che'
Rïn ri yikamisan kichin ri nunimal chikopi'.

Ja xinna' wi' nte, ja xinna' wi' rïn
Wuma rïn xa yajilo chik
Wuma rïn xok chi ak'u'x
Wuma rïn xmalin qa awäch.

Takuyu', tasacha' numak nute'
¿Achike xinb'än chawe nute' ? ¿achike xinb'än ?
Rïn xa k'a in iwir, xa k'a in kab'ijir
Wakami xinyäk nuq'a pa awi' nte'.

Xa muqül na k'a, töq xsaq'ijin pe rupam ri kaj
Xq'ajan k'a pe ri loq'oläj Junajpu' xkanul
Xa atzij nawajo' naya' chi
qe, loq'oläj ruwach'ulew
Xa yach'o, ja röj ri man nqajo ta yatqak'axaj

Ja re' ri atzij man nqajo ta nqak'ul
ix wiy, ix wal, yixinq'etej, yixintzuq
man nintz'ët ta ri ntib'en chwe
nab'ij chiqe

Xa k'a yojtikir nqakol ri qate ruwach'ulew
Kixam pe k'a ri e nimaläj,
Chi ke konojel ri rutz'aq rub'it ri Ajaw
Qatunu' ri quchuq'a, tisaqirisan k'a pe,
taläx ka ri k'ak'a k'aslemal.

RI RAQĀN YA'

Xtz'ib'an: Rosa Cándida Cúmez
Centro Educativo K'astajib'äl

Ri raqän ya' nek'o chi runaqaj wochoch,
Kan tikasäs nawak'axaj
Toq nb'ixan, q'ij q'ij ye'ek'o
Ri chokopi' ye'uk'uya', ye'uk'uya'.

Ri qate' ruwach'ulew
Rusipan chi qe ri loq'oläj ya'
Tiqachajij,
Richin ke ri' yojkikot
Wakami k'a ri'
tiqachajij.

Kan tik'asäs nawak'axaj
Toq nb'ixan ...
Kan tik'asäs kan tik'asäs
Nik'o ri ya' chi runaqaj wochoch.



PA NUTINAMIT NQAQ'IJ

Tz'ib'anel: Alberto Leonel Bal
San Juan Comalapa, Chimaltenango
Centro Educativo Intercultural K'astajib'äl

Pa nutinamit ri achi'a'
Kan jukumaj k'a yeb'e pa juyu'
Nb'ekitika' k'a ri q'än ixim
Nb'ekitika' k'a ri säq ixim.

Kan tik'asäs ri yesamäj
Kan nkich'ob' k'a chi rij ri kik'aslem
kan yematyoxin chi re ri Ajaw
kan yematyoxin chi re ri ruwach'ulew.

Toq nqaq'ij pa nutinamit
Yetzolin pe pa kisamaj
Kan kik'amon pe ri taq kisi'
Kan kik'amon pe ri kisamajib'äl.

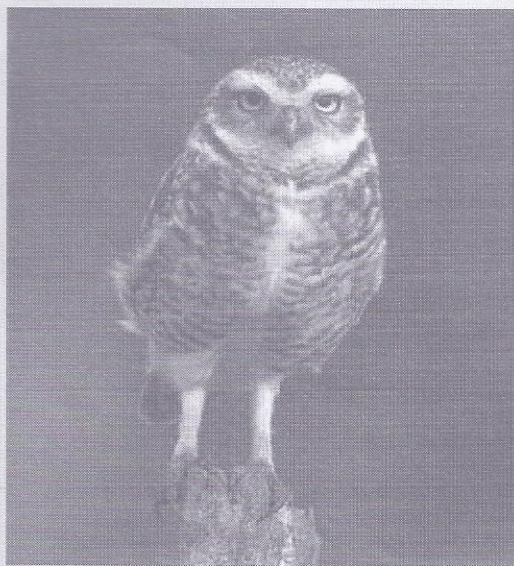
Kan yeb'ixan kan yeropin
Toq yetzolin pe pa kisamaj.



RI XOCH'

Xtz'ib'an: Carmen Coxaj Coz

Ri qatit qamama' nkitzijoq chi re jun chiköp ri rub'ini'an xoch', janila k'a ri samaj nub'an, ri xoch' nuya' rub'ixkil chi k'o nk'ulwachitäj pa k'aslem, chuqa' k'o nk'ulwachitäj chuqa' k'o chik jun chiköp rub'i' tukr, chuqa' ri tukr nuya' rub'ixkil chi k'o nk'ulwachitäj ruma nkitzijoq ri qach'alal chi ri chiköp re' janila nım kisamaj nkib'an chuwäch ri ruwach'ulew. Jun q'ij kan nutzijoq ri watit chi xsik'in ri xoch' pa ruwi' ri wochoch pa jun tokoq'a', pa ruka'n q'ij xk'ulwachitäj chi xkäm ri nutat, xq'ax ch'ich' chi rij pa b'ey ruma nqanataj chi ri chikopi' k'o jun nım kisamaj chwäch ri ruwach'ulew.



Ri xoch' chuqa' ri tukr nkiya' rub'ixkil ri k'o nk'ulwachitäj, ri je' man e itzel ta.

RI Q'ANAPWAQ XOK AQ'A'L

Xtz'ib'an: Ana Tzuquen.

Jun b'ey kan, jun achin chupam ri tinamit Pa Su'm yalan nurayij ri b'eyomal, ruma rija' yalan... yalan ti meb'a' ok, manaq rachoch, manaq k'iy rulew, rija' e k'o k'iy ralk'wal. Xa jun k'an ok ti rulew chupam ri juyu' nib'ix pa mixk'ol ab'äj chi re, ronojel q'ij nq'ax pa jun ti b'ey latz' latz', chuchi' k'a ri b'ey ri' ri achi meb'a' xril jun b'ojo'y.

Rija' xub'ij pa ranima, wakami xinok b'eyom, wakami k'a ri' xtinlög wulew, k'a ri' xtinb'an wachoch, k'a ri' xtinlög' nutzyaq.

Ri achi eqal, eqal xuchap ruk'otik ri b'ojo'y ruma xa muqul, toq xel pe ri b'ojo'y pa ulew, xpax pa ruq'a', toq xutz'ët xa ruyon aq'a'l nojinäq chupam, ri q'anapwaq xok qa aq'a'l.

Ke re' k'a xuk'ulwachij re jun achi re', ruma yalan k'iy xrajo' xulög' chi re rub'eyomal xa majani tiril. Ri winaqi' xkib'ij chi xok aq'a'l ri q'anapwaq ruma man richin ta rija', chuqa' ruma man xub'an ta ri matyoxinik.

Ri na'oj, man jun tarayij b'eyomäl xa man awichin ta rat.

—RUSIJAL RI QACH'AB'ÄL—



KAQCHIKEL CHOLCHI

Xtz'ib'an: Juan Diaz Gómez

Rix nib'ij chi achike ruma ri Käg, ri Käg; ruma ri kaqach'ame'y, ri kaqach'ame'y petenäg rik'in ri tzij kaqche', ruma pa qawujil kitz'ib'an kan ri ojer taq qati't qamama' chi xkik'üñ jun käg qach'ame'y toq xe'el pe ke la' pa Tulan, re käg qach'ame'y re' jun ramaj kaqche', ruma k'a ri' röj wakami chi jun molaj winaqi' nb'ix kaqchikela' chi qe, ri qach'ab'al kaqchikel ri rub'i'.



Ri q'ij JUN IMOX, ri Kaqchikel Cholchi', xunimaq'ijuj juwinäg juna' pa Maya' Cholq'ij rub'anon pe samaj pa ruwi' ri qach'ab'al chuqa' pa ruwi' ri qab'anob'al.

Kaqchikel ri qaxe'el e kaqchikela' ri qajotay; ruma ri' wakami mqab'ij ri kitum ri jotay kan käg käg käg. Ri chikopi' yexik'an yexajo chi kiq'a' ri jotay ruma nq'alajin chi jeb'el yekikot pa kik'aslem, ri je' nkib'ixaj: kaqchikel chi', kaqchikel chi', kaqchikel chi'; ri julëy chik nkib'ixaj: kaqtijay, kaqtijay kaqtijay.

Jun tukur nub'ixaj pa kaq'iq': Ajaw Ajpu', Ajaw Ajpu', Ajaw Ajpu', ruma retaman chi ri Ajaw Ajpu' ja ri' ri q'ij.

Kaqchikela' qaporoj ri pom, qatzija' ri qakotz'i'j , kojmatyoxin, chi re ri Ajaw; kojxuke' pa releb'al ri q'ij chuqa' kojxuke' pa ruqajib'al ri q'ij, ke ri' tqab'ana' chuqa' kojxuke' pa releb'al ri kaq'iq' chuqa' kojxuke' pa ruqajb'al ri kaq'iq', qanataj ri Ajaw Ruk'u'x Kaj, ri ruk'u'x ruwach'ulew,



ri ruk'u'x ri kaq'iq', ri Ruk'u'x ya' chuqa' ri Ruk'u'x q'aq'.

Kojb'ixan tqaq'etej qi', tqab'ana' jun setesik richin yojxajo' chi rij ri qaxukulem tqab'ij: Nim ri Kaqchikel Cholchi', nim ri Kaqtijay, nim ri kaqtijonik, nim ri kaqtijob'al, nim ri kaqtijonel, nim ri kaqtijoxel, nim ri qaqb'anob'al, ruma kaqchikel ri qaxe'el e kaqchikela' ri qajotay.

RICHIN RI XTIB'E OK NUTIJONEL

Xtzib'an: Ana floricelda Yucuté
Santiago Sacatpequez

Toq xkinapon chuchi' ri tijonijay kinawoyob'ej rik'in kikitomal richin ke ri' man ninxib'ij ta wi', ruma xinapon toq xq'ax yan ri ramaj ruma man xink'utuj ta q'ij chawe chi xinél. Tiq'ax pa awi' chi rin k'a in ak'wal na, chuqa' k'a ri' ninwetamaj, wi rat nak'üt rik'in ronojel ri ak'u'x ri tijonik, ke ri' chuqa' xtinwetamaj.

Man kojch'o chij rij ri nuwex ruma k'o ruk'obj'al, chupam ri' wewan ri q'axomal ri rusipan ri k'aslem chwe; man k'atze'en chi rij ri nutz'ib'awuj, ruma xa rik'in taluwuj ninb'anon ri rutzil, chi ri' nuk'üt ronojel ri kamik, k'ayewal nb'anatäj chupam ri ruwach'ulew.

Man tab'ij chwe chi niya' pa ramaj ri nusamaj wi rat yatapon toq xq'ax yan ri ramaj. Wi rat nab'ij chi rin ri k'aslem richin chwa'q kab'ij man ta k'is ruq'ij ri nuk'aslem wakami, xab'a achike k'ayewal k'o chupam ri ak'aslemal toqa' chi ak'u'x chi rin manaq numak, wi rat nak'üt ri üt, jantape' yatinnataj.



Matyox chiwe.

TOQ XINWETAMAJ AWÄCH

Xtz'ib'an. Ana Floricelda Yucuté Cutzán.
Santiago Sacatpequez

Rub'anon kan nuyonil in k'o wi, k'o ri b'is wik'in. chupam ri nuyonilal xina'ojij jun winäq, jeb'ël runa'oj. Ri nurayb'al k'a ja ta ri ninwetamaj ruwäch jun utziläj winäq. Ronojel ri aq'a xink'utuj k'a chi re ri Ajaw, chi ninwetamaj ta ruwäch jun ala', jeb'ël achi'el rat. Ri q'ij ri' xoqa' pa nuk'aslem po ri juna' man ruk'amon ta, ruma k'a rin k'a in ko'öl na, ruma' ri'.

Xtzolin chik ri b'is wik'in. xq'ax ri q'ij po ri ajowab'äl yalan qitzij achi'el ri xink'utuj, ruma ri' xatzolin, ruma ri' wakami at k'o wik'in.

Toq xinwetamaj awäch xjalatäj ri nuk'aslem, xanojsaj chi ajowab'äl, matyox xatzolin wik'in.

Janila yatinwajo'...



PIXA'**KAQCHIKEL CHOLCHI'**

Rub'elej Kaqchi' Wuj No. ...

Ri qati't qamama', ri qate qatata'
 xkib'ij kan:
 Chi toq yojsamäj pa juyu'
 mani' nqatzu' ri sutz' toq nb'iyin;
 wi xtiqatzu',
 npe q'oral chi qe, chuqa man
 xtib'iyin ta chik ri qasamaj yojajin chi re.

RUNA'OJ JUN MAM

Tz'ib'anel: Ines Puluc Boror

Tinamit: San Juan Sac. marzo2006

K'o jun b'ey jun mam xutzijoj chwe ruma jun ch'uti' rumam xuk'utuj chi re rija achike rub'anon pa rutinamit pa ronojel ramaj, rija' k'iy achike xunük qa pa ruwi' rub'eyal ruk'aslem pa rutinamit, rija' xub'ij chi ri ch'uti' rumam wakami ninwajo' nintzijoj chawe ri jalajöj achike ri ninb'anon rin wawe'.

"Ojer kan toq k'a in ala' nqamol qi' kik'in ri wachib'il richin yojb'esamäj pa juyu', ke la' nqatik awän, kinäq', k'um, ik, xkoya', k'iy achike nqatik, ri nutata', nute', nuchaq', nunimal, chuqa ri wana' yekikot ruma k'o ri qaway chuqa' ri qaq'utu'.

Ja ri' ri ninwajo' nintzijoj chawe e k'o wachib'il jeb'ël kow kik'u'x richin yepalaqin pa q'equn. Jun b'ey xb'eqakanoj chikopi' ruma nkib'ij ri winaqi' chupam ri juyu' k'o chi qanaqaj jeb'ël chikopi' e k'o. xojb'e pa wuqu' ramaj richin tokaq'a xeb'eqakanoj ri chikopi', toq xojok apo chupam ri juyu' e k'iy tz'ikinaj yeb'ixan, ri kuk yetzok'in chi ruq'a' ri mima'q taq che' toq k'a ri' xqatz'ët jun nima'q masat ri wachib'il xuk'aqij rik'in ruq'aq', töq xqatz'ët majun xuchap ta ri q'aq' richin ri masat. Töq xqatzu' chik nintzok'in xb'e ri masat chi qawäch."



K'atzinel chi yepixab'ax ri taq ak'wala' richin nkil jun utziläj k'aslemal.



Xojb'yin chupam ri k'ichelaj chi kanoxik ri chikopi'. Richin man nsxäch ta ri ak'u'x ri jun aq'a' ri' xqil pe umül, wuch', xpumüy, chuqa' O'on. Ja ri' ri chikopi' xqachop pe ri jun b'iyajnem xqab'an kik'in ri wachib'il chupam ri jun k'ichelaj ri k'o chi qanaqaj akuchi k'o wi ri qasamaj.

Achike xkanaj pan ajolom xink'utuj chi re ri numam, töq xutzolij pe rutzij nub'ij rija' ja watit' ja ri nab'ij chuwe, ri b'anon kan e k'o jalajöj kiwäch chikopi' chupam ri k'ichelaj ri k'o pa qatinamit, wakami man yek'ij ta chik chikopi' e k'o ruma xek'iyär ri winaqi', chi kikojol ri winaqi' e k'iy kamisanel chikopi' e k'o ruma ri' ri chikopi' xek'is chupam ri k'ichelaj.



QACH'ALAL QI'

Xtzib'an: Juan Diaz Gomez

Röj yojb'ixan, röj yojb'ixan
Pa Kaqchikel wakami;
Kaqchikela' qach'alal qi'
Rix kixkikot wakami.

Pa Iximche' xtaqab'an
Jun nimaq'ij richin yojtzijon:
Ruma ri' wawe' yojtzib'an,
Yojtzijon, yojb'ixan iwik'in.

Q'ach'alal qi' man tiqamestaj,
Öj k'o pa Iximulew.
chi ixoqi' chi achi'a'
Qaq'etej qi' wakami.

Pa Iximche' xtiqab'an
Jun nimaq'ij richin yojtzijon:
Richin yojb'ixan, richin yojxajon:
Qaq'etej qi', kan qaq'etej qi'.

¿ACHIKE RI' RI KAQCHIKEL CHOLCHI'?

RI QASAMAJ

Röj öj pa'äl pa ruwi' runuk'ik ri ch'ab'äl chuqa' ri b'anob'äl ruma ri' tikirel nqaya' ri uchuq'a' pa ruwi' ri ruk'iyinem ri qab'anikil röj maya' winaqi' chuqa' richin rupab'axik ri kaqchikel tinamüt chi kipam ri na'ojil, pwaqil, winaqirem, b'anob'äl chuqa' ri k'ak'a' taq na'oj richin chi nqaya' ruchuq'a' chuqa' richin xtik'ut ri qab'anikil chuqa' ri qab'anob'al richin ri xtiya'öx ruch'ojkil pa moloj chuqa' pa qayonil richin chi xtinuk'utäj jun Saqamaq' akuchi e k'o k'iy ch'ab'äl chupam, k'iy qawäch, k'iy qab'anob'al, pa rub'eyal ta xtib'an richin xtik'utüx chuqa' xtib'an tzij pa ruwi'.

RI QATZUB'AL:

Richin ri juna' 2025 ri kaqchikel tinamüt xtiril ta, pa ruxe'el maya' na'oj ri runimilem chuqa' ruk'iyilem ri winäq richin chi xtuya' ta q'ij xtub'an jun utziläj nüm k'aslem rik'in ronojel ri ruk'amom pe ri b'anob'äl chuqa' ri ch'ab'äl, xtik'ulun ta rik'in ch'akonel samaj pa moloj chuqa' pa kiyonil pa jun Junawäch Saqamaq' ri e k'äs rik'in kikotem, junamilem chuqa' xa jun kib'anon chupam ri jalajöj kib'anikil ri winaqi' chuqa' ri kib'anob'al.

RI KAQCHIKEL CHOLCHI' JUWINAQ JUNA' PA MAYA' CHOLQ'IJ RUB'ANON PE SAMAJ PA RUWI' RI QACH'AB'ÄL

Ri Kaqchikel Cholchi' jun ruq'a' ri K'ulb'il Yol Twitz Paxil, jun moloj ri pa'äl pa ruwi' ri Kaqchikel Ch'ab'äl chuqa' pa ruwi' ri qab'anob'al, nuya' rutzijol chi re juna' re', ri q'ij Jun Imox (22/07/2007), xunimaq'ijuj ri juna' rub'anon pe samaj. Ruma k'a ri' nqaya'rutzijol ri samaj najin nb'an:

RUQ'A' RUSAMAJ RI KAQCHIKEL CHOLCHI'

SAMAJ PA RUWI' SOLCHI':

Re jun ruq'a' samaj re' nusöl rij pa rub'eyal rutz'ib'axik ri qach'ab'äl:
Ri samaj:

- ❖ Rutz'ajik ri Runuk'ulem pa Rub'eyal Rutz'ib'axik ri qach'ab'äl. (Gramática Kaqchikel)
- ❖ Runuk'ik jun Nimacholtzij pa qach'ab'äl.
- ❖ Runuk'ik chuqa' rutz'ajik ri Jun Choltzij Kaqchikel-Kaxlan.
- ❖ Rumolik chuqa' runuk'ik na'oj pa ruwi' ruq'ajarik ri taq b'i'aj chuqa' ruka'n taq b'i'aj e k'o pa qach'ab'äl.



SAMAJ PA RUWI' TIJONĪK:

Nuk'üt ruch'ab'exik chuqa' rutz'ib'axik ri qach'ab'äl pa kak'al kab'lajuj tinamit.



- ❖ Samaj pa ruwi' ruk'utik ri qach'ab'äl, Kaqchikel Tjonem Jay. "KAQTIJAY" rub'i', (Centro de Aprendizaje del idioma Kaqchikel) nk'üt chi kiwäch rusamajela'
- ❖ ri chanpomal, qawinaq chuqa' xab'a achike winaqi' ri nkajo' nketamaj ri qach'ab'äl.
- ❖ Rujikib'axik tzij pa ruwi' jun wuj richin ruk'utik ri qach'ab'äl pa rub'eyal.
- ❖ Runuk'ik samajib'äl richin Tjonik pa KAQTIJAY chuqa' pa talutzij.

SAMAJ PA RUWI' RI B'ANOB'ÄL:

Re jun ruq'a' samaj re' nch'o pa ruwi' ri qab'anob'al chuqa' pa ruwi' ri Nimab'äl K'u'x, ja re' ri samaj najin nb'an:

- ❖ Najin jun ch'ob'oj pa ruwi' ruxe'el ri k'aslem, re samaj re' najin rub'anik pa taq tinamit e k'o pa rulewal ri Kaqulew, najin yech'ab'ex ri tetata', nimöl ri kina'oj kichajin pa ruwi' ri k'aslem chuwäch ri qate' ruwach'ulew. "Maya' Nimab'äl K'u'x."
- ❖ Rutz'ajik ri Maya' Cholq'ij richin ri juna' apo.
- ❖ Rumolik na'oj pa ruwi' ri Maya' Aq'omanik.



SAMAJ PA RUWI' RUTALUXIK RI QACH'AB'ÄL:

Re jun samaj re' nitaluj jalajöj taq na'oj chi ke ri qawinaq pa ruwi' ri qach'ab'äl chuqa' pa ruwi' ri qab'anob'al; pa Talutzij, pa Taluwäch, pa Taqoya'l tzij, chuqa' chuwäch jalajöj taq wuj. Ja re' ri samaj:



- ❖ Runuk'ik chuqa' rutz'ajik ka'i' KAQCHI' WUJ.
- ❖ Rotaluxik na'oj pa Taqoya'l tzij KAQTZIJOLAJ rub'i'.
- ❖ Samaj pa Talutzij "Ruk'u'x Maya' B'anob'äl", yojsamaj pa wuq'u' talutzij.
- ❖ Runuk'ik samaj pa Taluwäch.
- ❖ Rotaluxik ri Taqonem taq Tzij, 65-90 richin ri K'ulb'il Yol Twitz Paxil chuqa' ri Taqonem Tzij 19-2003 kichin ri Achamaqi' taq Ch'ab'äl chi Iximulew (Ley de Idiomas Nacionales). chi ke ri qawinaq.

Ri qach'ab'äl xtib'ejotayin pe, we rat naya' rejqalem, naya' ruq'ij, chuqa' we rat nawokisaj ri qach'ab'äl xab'a akuchi'.

**Kaqchikel Cholchi'/Rujuk'al jun Kaqchi' Wuj.
"Kaqchikel ri qaxe'el, E Kaqchikela' ri qajotay!**